

# Update: Riverfront Park at Bridesburg

## February 17, 2021

---

### AGENDA

Welcome

Riverfront Park at Bridesburg

*Rep. Joe Hohenstein, Philadelphia Parks and Rec, and Riverfront North*

Review of park design

Funding update and timeline

Safety and security

Cokies update

*Councilmember Bobby Henon*

Community Benefits Agreement

*Yvonne Stephens, Bridesburg Community Action Alliance*







Port Richmond

I-95

Delaware Ave. Ext. & Sidepath to Tacony St.

Bridesburg

Tacony St.

K&T Trail, Phase 1

Frankford Creek Greenway

Orthodox St.

Bridge St.

Frankford Boat Launch

End of Port Richmond Trail

Future Bridesburg North Trail

Delaware Ave. Ext. Phase 1A

Bridesburg Riverfront Park



**10.26  
acres**

**YELLOWBIRD  
BUS SITE**

**BULKHEAD LINE**

**ORTHODOX STREET**







Current conditions: the former concrete factory is overgrown, tagged with graffiti, and known as a hang out spot with mounds of beer cans and debris.





Delaware River

The Lawn

restroom

gravel

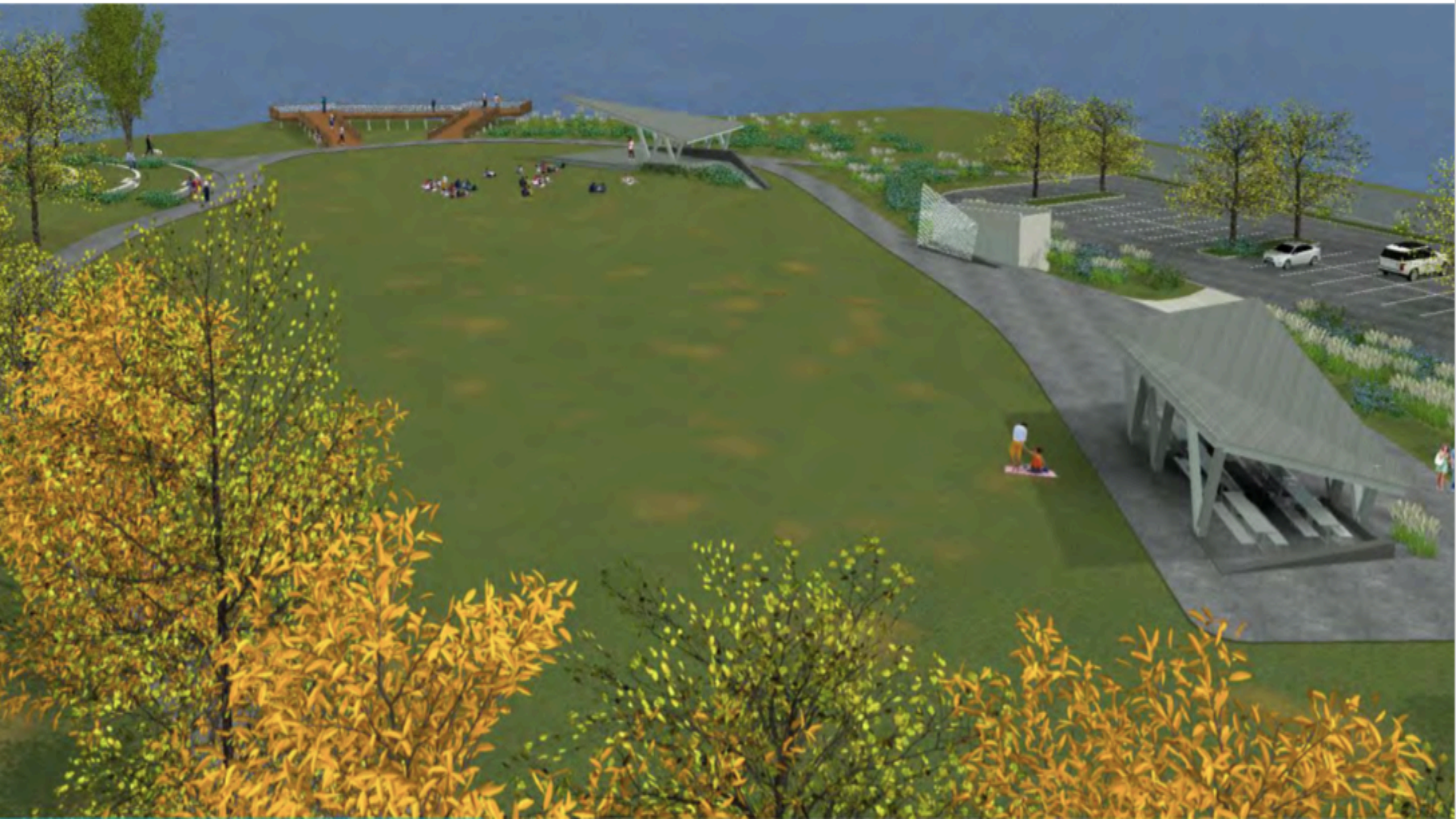
garden

North Delaware Riverfront Greenway (Planned)

Delaware Avenue Extension (Planned)

Orthodox Street













View from Terraced Lawn





## FUNDING

\$6.2 million raised for construction

Support from the City of Philadelphia, state and federal grants, and private foundations.

## STATUS

Finalizing contracts with City and funders

Permitting and approvals

Working with PennDOT on Delaware Ave. Extension

Finalizing scope and preparing bid documents

## TIMELINE

Request for Proposal targeted for August 2021

Environmental remediation begins fall 2021

Construction begins in spring 2022 (10-12months)

Open in fall 2022/spring 2023

Weekly walks led by neighbors with WeWalkPHL in 2020.





## SECURITY MEASURES IN DESIGN

Vehicle gate opened and closed daily by park rangers.

Lighting in parking lot.

Security camera in parking lot.

## SAFETY

Park monitored by Riverfront North and Parks and Recreation staff, with ongoing communication with police, civic associations, and elected officials.

Park programmed with positive activity by Riverfront North and partners.

Community Friends Group to help with activities and monitoring.





Riverfront North Partnership helps the City of Philadelphia maintain and steward parks. We work with partners to provide outdoor movie nights, yoga, fishing, nature walks, and family-friendly programs.





## For More Information

---

### Riverfront North Partnership

Gina Craigo, Community Engagement Manager

Email: [gina@riverfrontnorth.org](mailto:gina@riverfrontnorth.org)

Phone (m): 215-962-8726

[RiverfrontNorth.org/Bridesburg](http://RiverfrontNorth.org/Bridesburg)